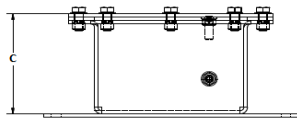
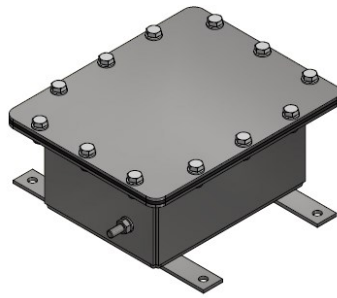
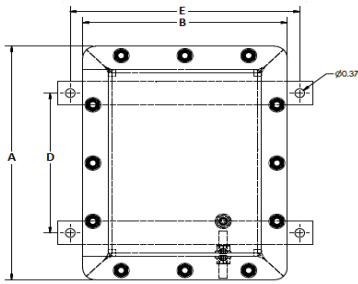




# SUBMERSIBLE STAINLESS STEEL JUNCTION BOX

NEMA 6P

JSMI Imperial Series



### INDUSTRY STANDARDS

Meets NEMA Type 6P requirements

NEMA 4,4X,6P and IP68, IP67

### APPLICATION

For indoor and outdoor applications that require corrosion protection from harsh environments and water. Submersible Junction Series enclosures are waterproof up to 15ft / 5m submersion and suitable for harsh marine environments, flood zones, tunnels, wharves, lift wells and sump environments.

### MODIFICATION AND CUSTOMIZATION

SLAYSON is able to modify all our Enclosures to suit your needs!

Custom sizes available on request.

### SPECIFICATIONS

- Submersible up to 15 ft / 5 m
- Manufactured from 14 gauge Type 316 Marine Grade Stainless Steel
- Seams Continuously welded and blended smooth
- Single piece Neoprene Gasket
- Minimum flange width to maximize internal capacity
- Mounting Brackets on Enclosure rear for direct wall mounting
- Grounding Earth Stud on Enclosure body

### ACCESSORIES

- Clear Polycarbonate Lid
- IP68 Stainless Steel 316 Cable Glands / Cord Grips
- Fluorosilicon (FVMQ) Gasket resistant to Fuels & Oils
- Mount-In-Pace internal threaded mount studs, for fastening Mount Plate or Din Rail
- Internal Gear Plate or DIN Rail

PART NUMBER	A	B	C	D	E	GAUGE
Imperial	LENGTH	WIDTH	DEPTH	MOUNT LENGTH	MOUNT WIDTH	
JSMI181810	18	18	10	16	16	1.5
JSMI161606	16	16	06	14	14	1.5
JSMI161406	16	14	06	14	12	1.5
JSMI141405	14	14	05	12	12	1.5
JSMI141205	14	12	05	12	10	1.5
JSMI121204	12	12	04	10	10	1.5
JSMI121004	12	10	04	10	08	1.5
JSMI101004	10	10	04	08	08	1.5
JSMI100804	10	08	04	08	06	1.5
JSMI080804	08	08	04	06	06	1.5
JSMI080604	08	06	04	06	04	1.5
JSMI060604	06	06	04	04	04	1.5

To Place an Order or Request a Quotation , please send all inquiries to our team of experienced Sales Engineers who can assist with all modifications, custom sizes and accessories to ensure your SLAYSON Submersible Enclosure meets your exact Applicational and Environmental requirements.